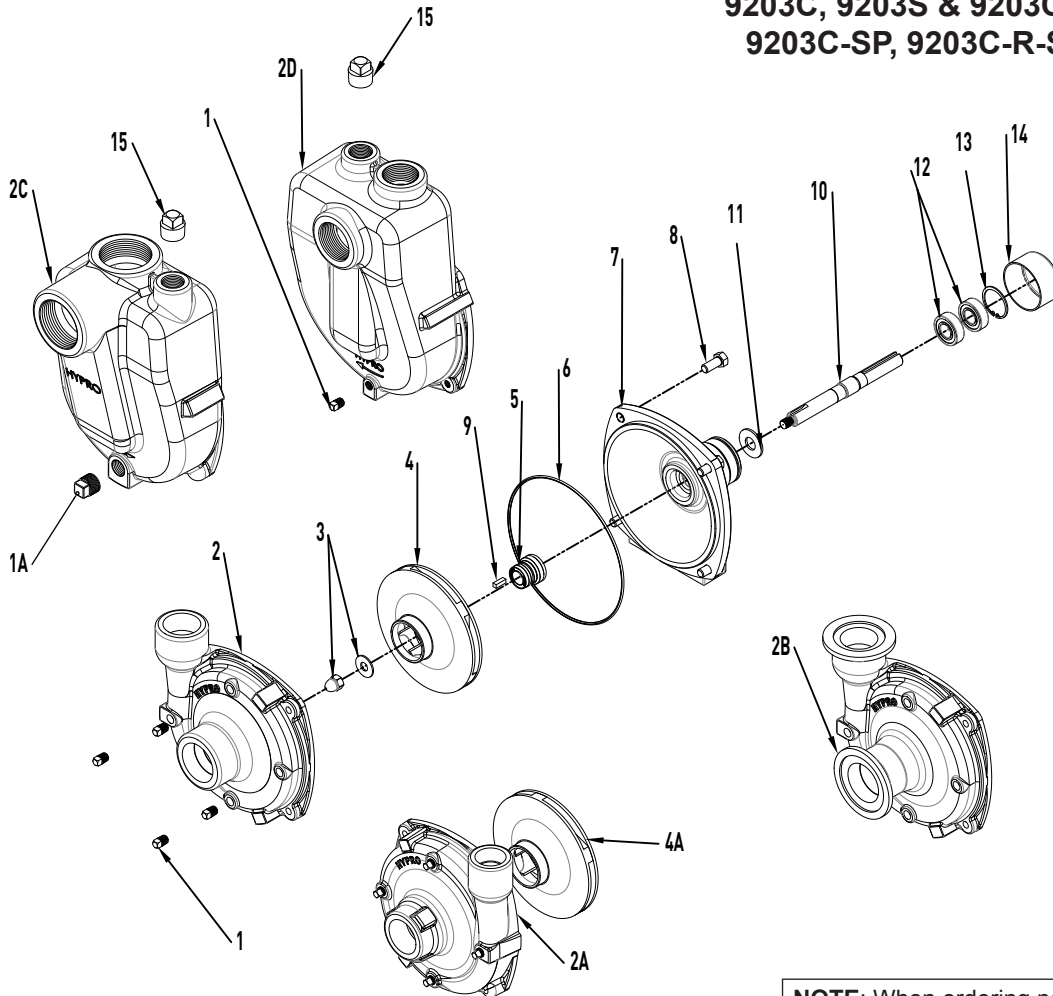


## Replacement Parts

The following drawings show the pumps and their replacement parts. **Only genuine replacement parts should be used, failure to follow this warning can result in damage to property, serious injury or death.** If the pump malfunctions or is defective it should be sent back to Hypro for service.

**9203C, 9203S & 9203C-R & 9203S-R,  
9203C-SP, 9203C-R-SP & 9203S-SP**



Silicon Carbide Seal Kit No. 3430-0589 consists of:  
 (1) Ref. 5 Mechanical Seal  
 (1) Ref. 6 O-Ring

Standard Seal Kit No. 3430-0332 consists of:  
 (1) Gasket (not shown)  
 (1) Ref. 5 Mech. Seal (Viton)  
 (1) Ref. 6 O-Ring

**NOTE:** When ordering parts, give QUANTITY, PART NUMBER, DESCRIPTION, and COMPLETE MODEL NUMBER. Reference number are used ONLY to identify part in the drawing and are NOT to be used as order numbers.

Ref. No.	Qty. Req'd.	Part No.	Description
1	4	2406-0007	Drain Plug (Cast Series)
1A	4	2406-0016	Drain Plug (Stainless Steel)
1B	1	2406-0002	Drain Plug
2	1	0150-9000C	Pump Casting (Cast Series)
2	1	0150-9000S	Pump Casting (Stainless Series)
2A	1	0152-9000C	Pump Casting (Reverse)(Cast Series)
2A	1	0152-9000S	Pump Casting (Reverse)(Stainless)
2B	1	0153-9000C	Pump Casting (Flanged)(Stainless)
2B	1	0153-9000S	Pump Casting (Flanged)(Stainless)
2C	1	0152-9070C	Self Priming Chamber
2C	1	0150-9070S	Self Priming Chamber (Stainless)
2D	1	0150-9070C	Self Priming Chamber
3	1	3430-0825	Impeller Nut/Washer
3A	1	2253-0002	Impeller Nut/Washer
4	1	0401-9100P	Impeller (Cast Series)
4	1	0402-9100P	Impeller (Stainless Series)
4	1	0407-9303P	Impeller (GTX)

Ref. No.	Qty. Req'd.	Part No.	Description
4A	1	0403-9100P	Impeller (Reverse)(Cast Series)
4A	1	0404-9100P	Impeller (Reverse)(Stainless)
5	1	3430-0332	Mechanical Seal
5	1	3430-0589	Mechanical Seal (Stainless Steel)
6	1	1720-0083	O-Ring
7	1	0750-9200C3	Mounting Flange (Cast Series)
7	1	0756-9200S	Mounting Flange (Stainless Series)
8	4	2210-0020	Bolt (Cast Series)
8	4	2210-0125	Bolt (Stainless Series)
9	1	1610-0015	Key (Cast Series)
9	1	1610-0044	Key (Stainless Series)
10	1	3430-0844	Shaft
11	1	1410-0056	Slinger Ring
12	2	2000-0010	Ball Bearing
13	1	1820-0013	Bearing Retainer
14	1	2300-0025	Protective Cover
15	1	2406-0001	Pipe Plug